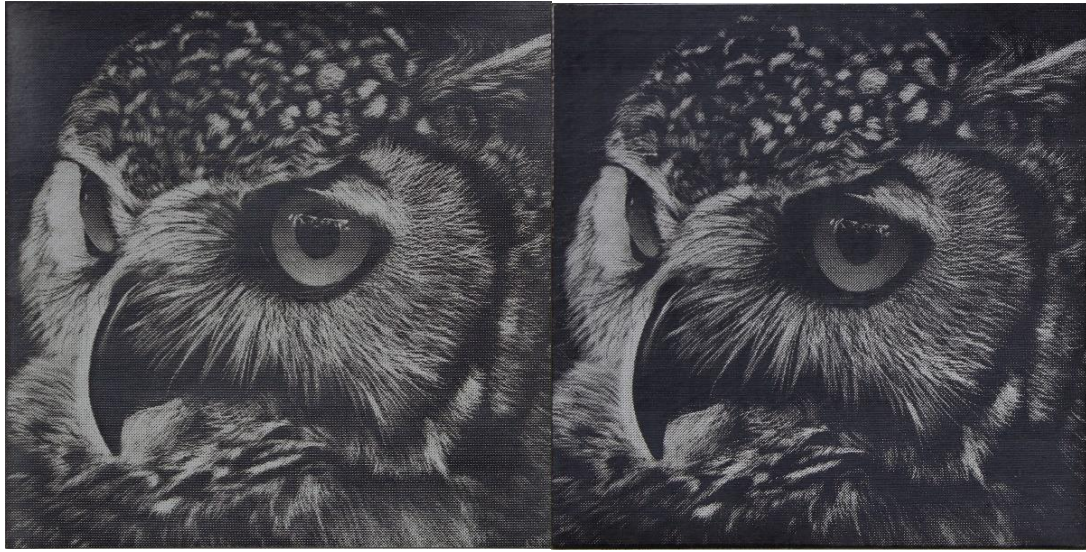
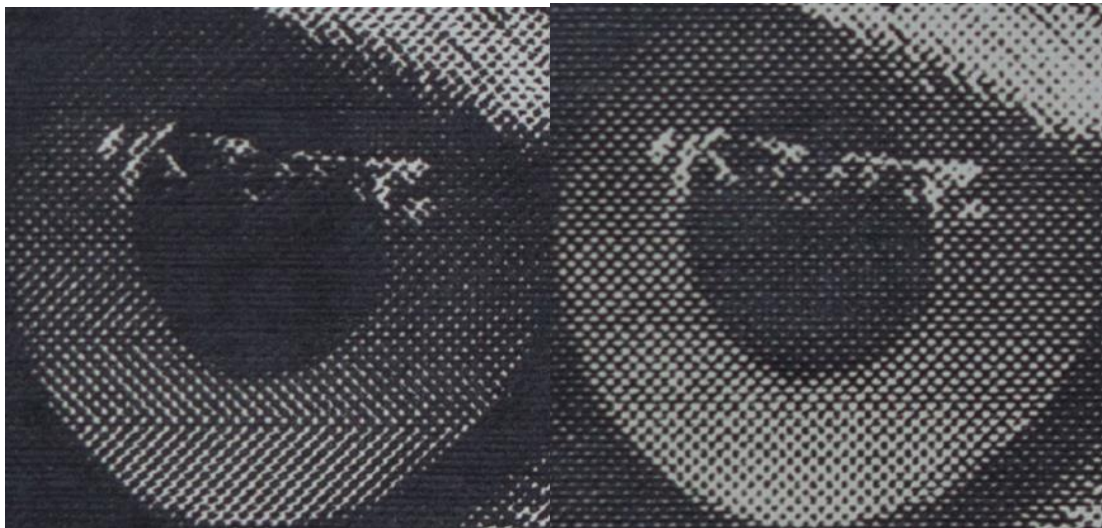


Part 1: Standard 2" head vs TL HR head



Standard 2" head

TL HR head



Standard 2" head

TL HR head



Standard 2" head

TL HR head



Standard 2" head

TL HR head

HR head can achieve a smaller dot size.

Part 2: TL HR head vs US Beam Buddy



TL HR head

US Beam Buddy



TL HR head

US Beam Buddy



TL HR head

US Beam Buddy

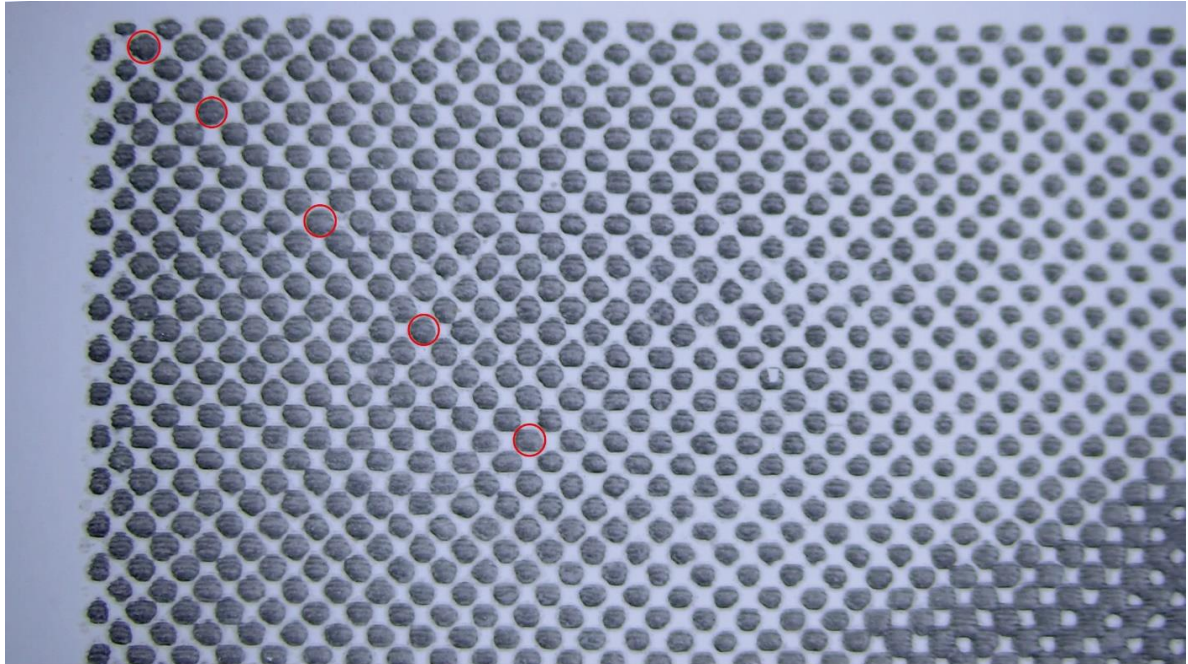


TL HR head

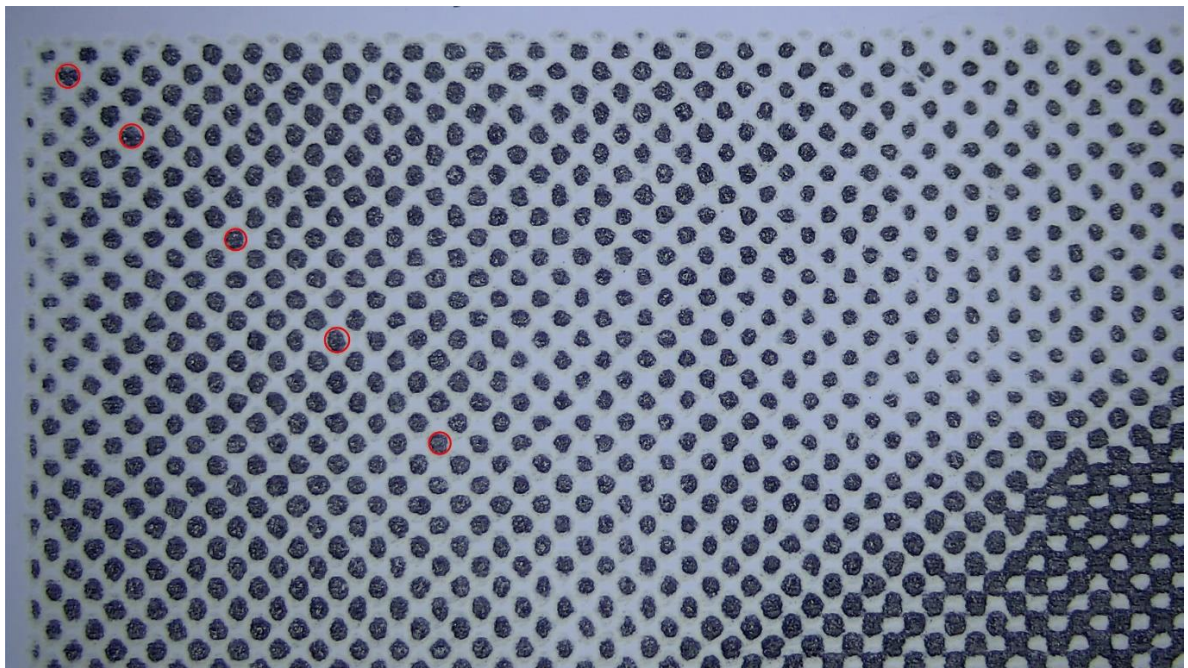
US Beam Buddy

The US Beam Buddy can achieve more details, and makes the engraving result deeper.

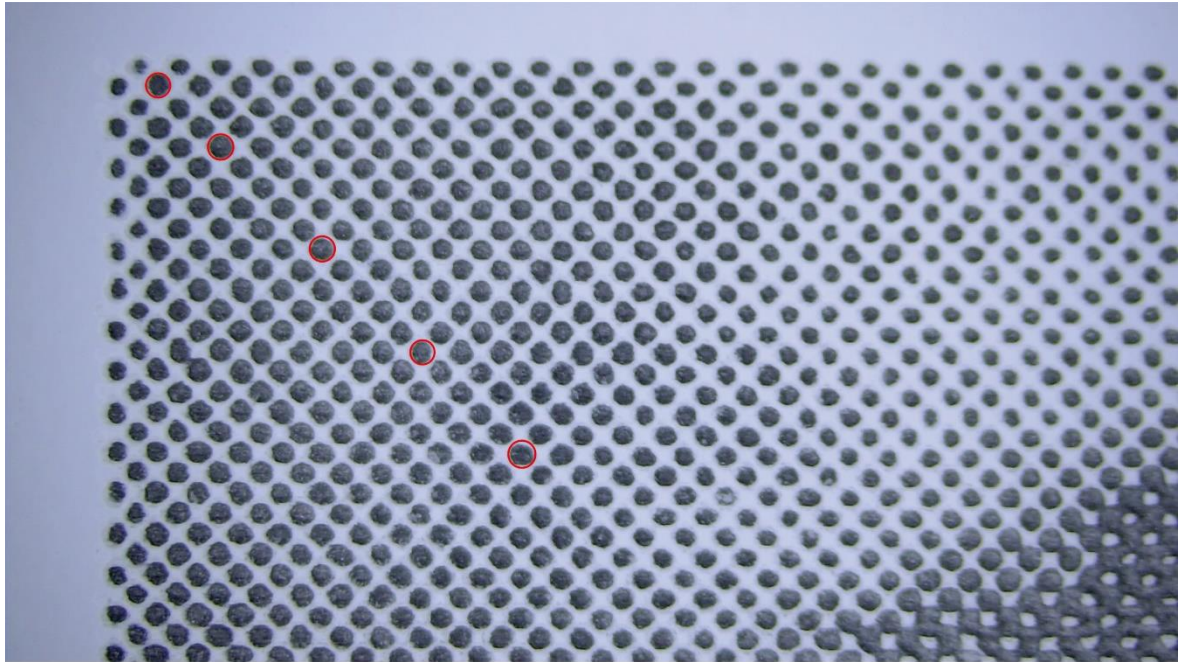
Part 3, Dot size comparison



2' laser head



HR head



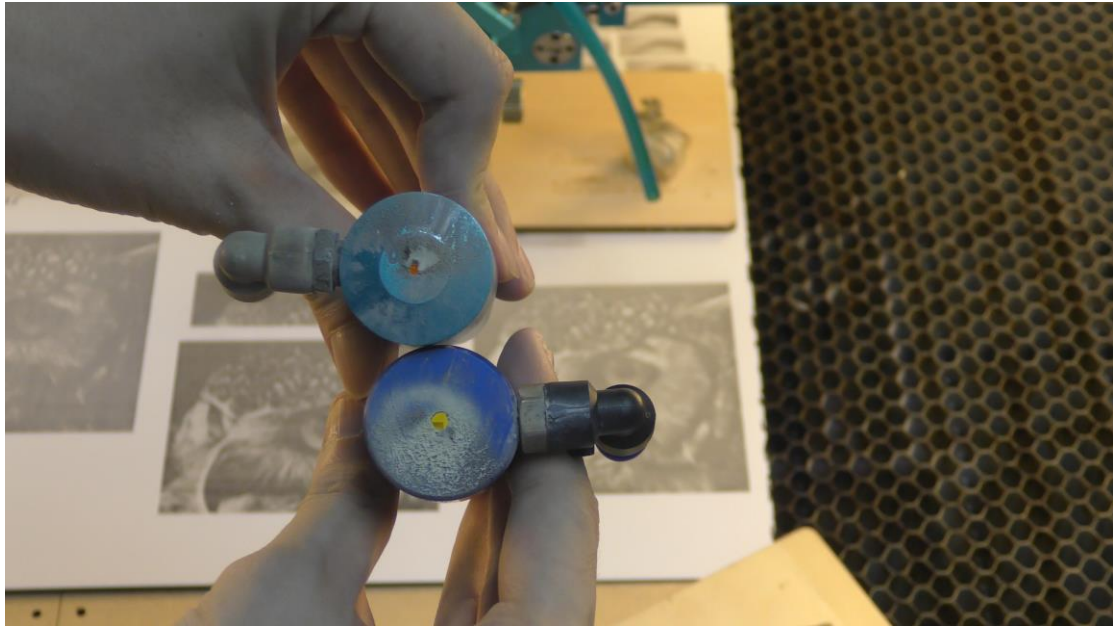
USA-HR head

Dot	Stander head	HR head	USA - HR head
1	17.415	15.081	13.123
2	16.086	15.611	13.758
3	16.933	14.42	13.626
4	16.272	14.552	13.079
5	16.933	14.949	14.685
Average	16.7278	14.9226	13.6542

We calculate the dots size by using electron microscope, dot size of US Beam Buddy is

the smallest, besides, the dot is more balanced.

Part 4: Air blowing result



We had problem with TL HR head that the nozzle is easily to be blocked with engraving material dust, problem seems still there with the US Beam Buddy, Things are a little bit better.