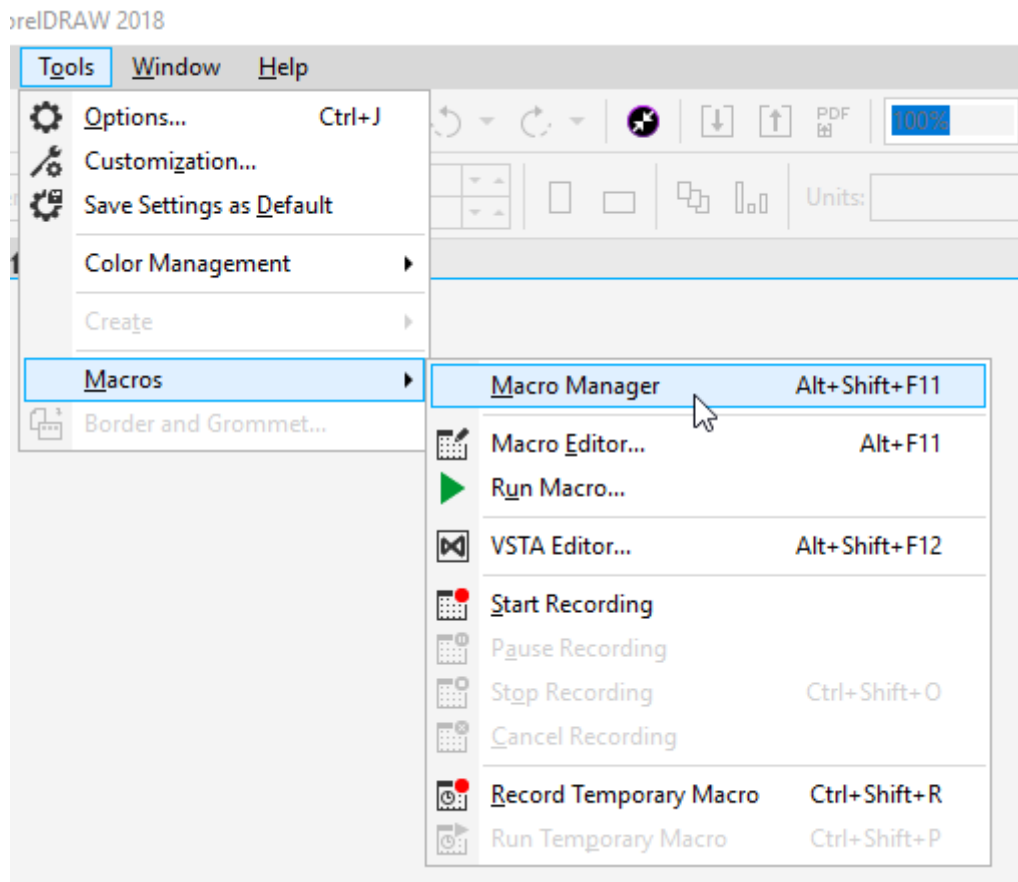
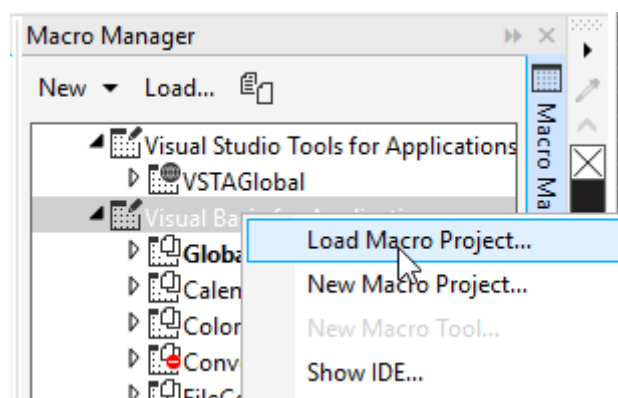


Installing the LightBurn macro for CorelDraw

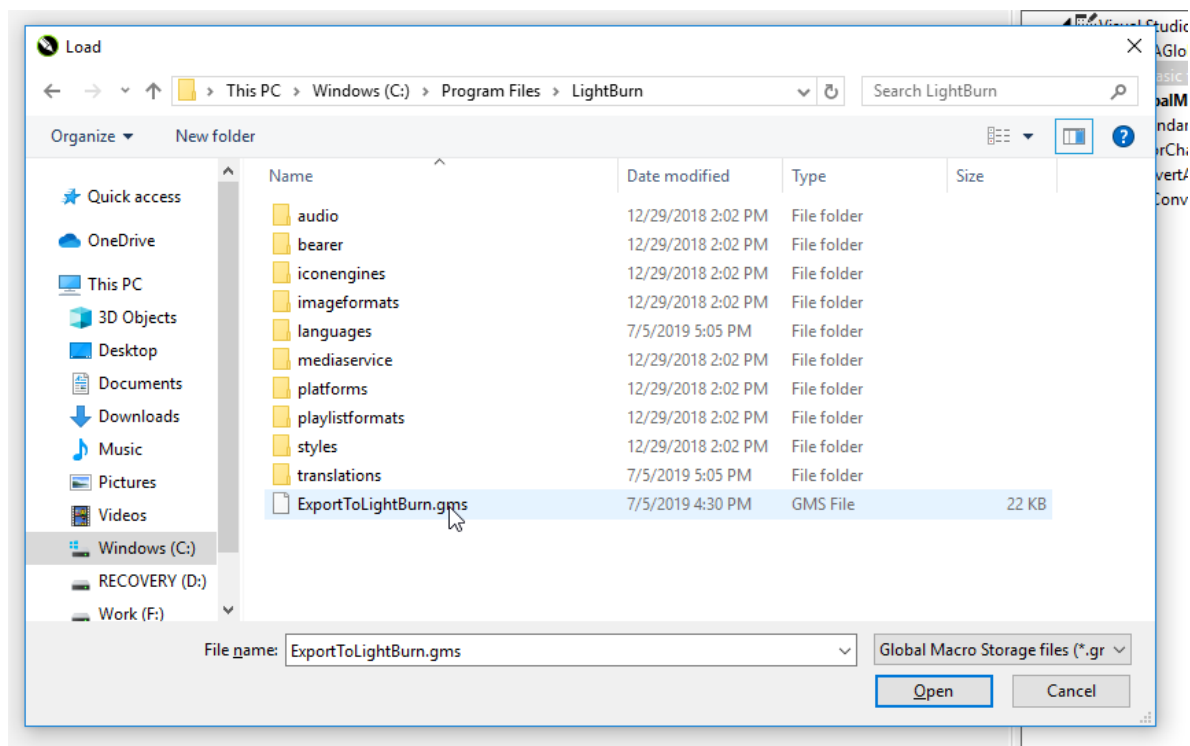
Run your version of CorelDraw. When it's running, open the Macro Manager, like this:



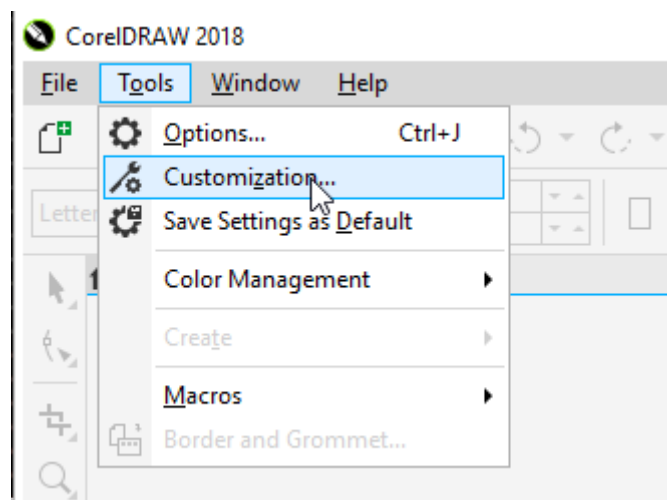
In the Macro Manager window, under the Visual Basic for Applications entry, right-click, then select Load Macro Project:



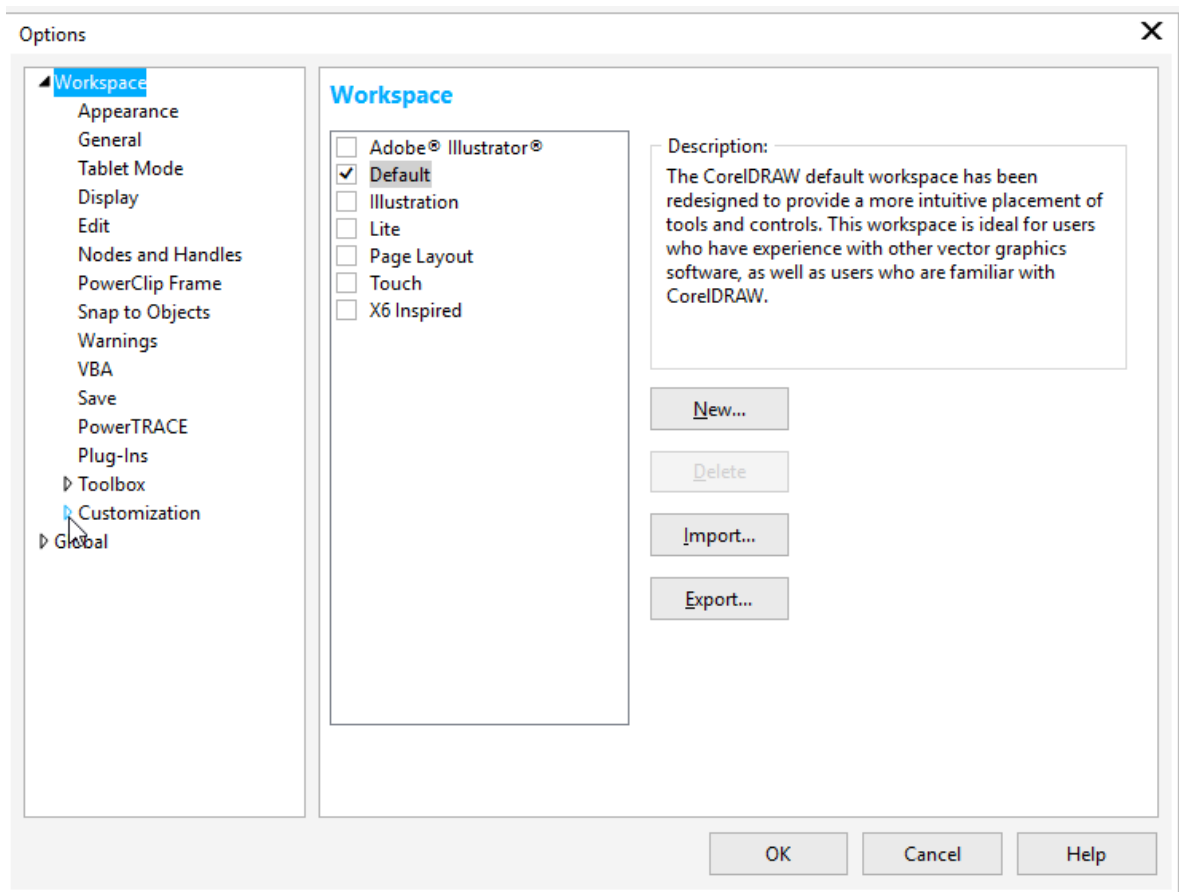
Browse to the LightBurn install folder in C:\Program Files\LightBurn and select the ExportToLightBurn.gms macro project:



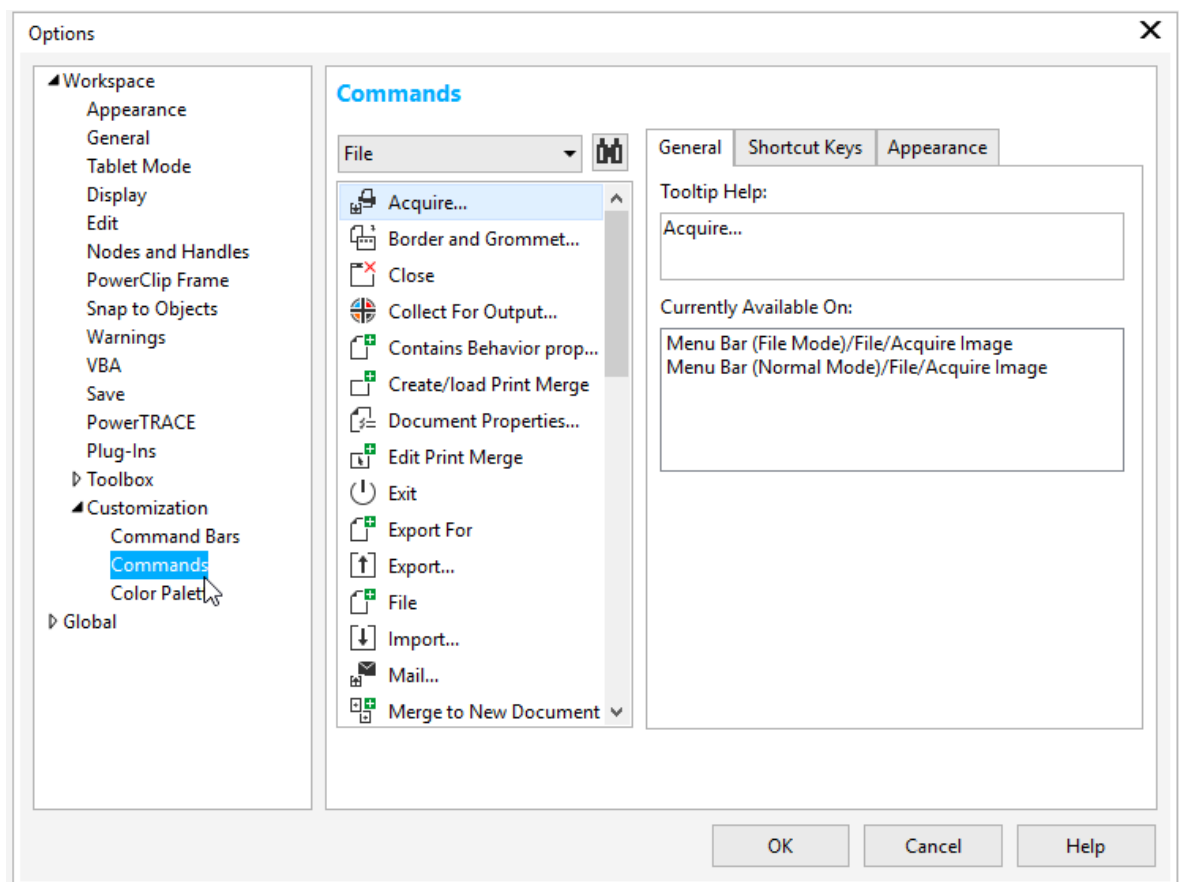
Now, go to Tools > Customizations:



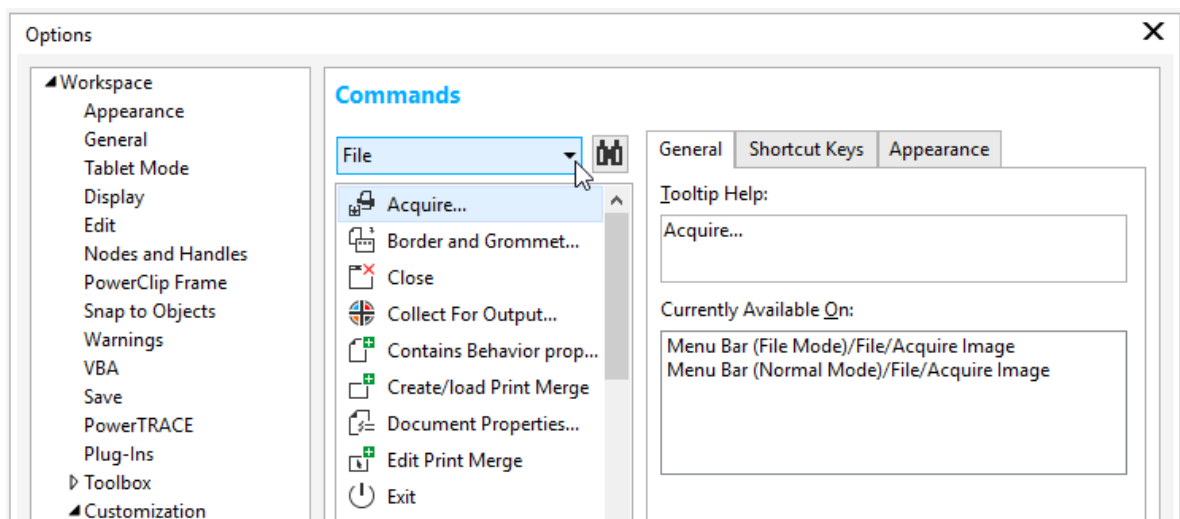
Expand the entry for Customization by clicking the small triangle highlighted here:



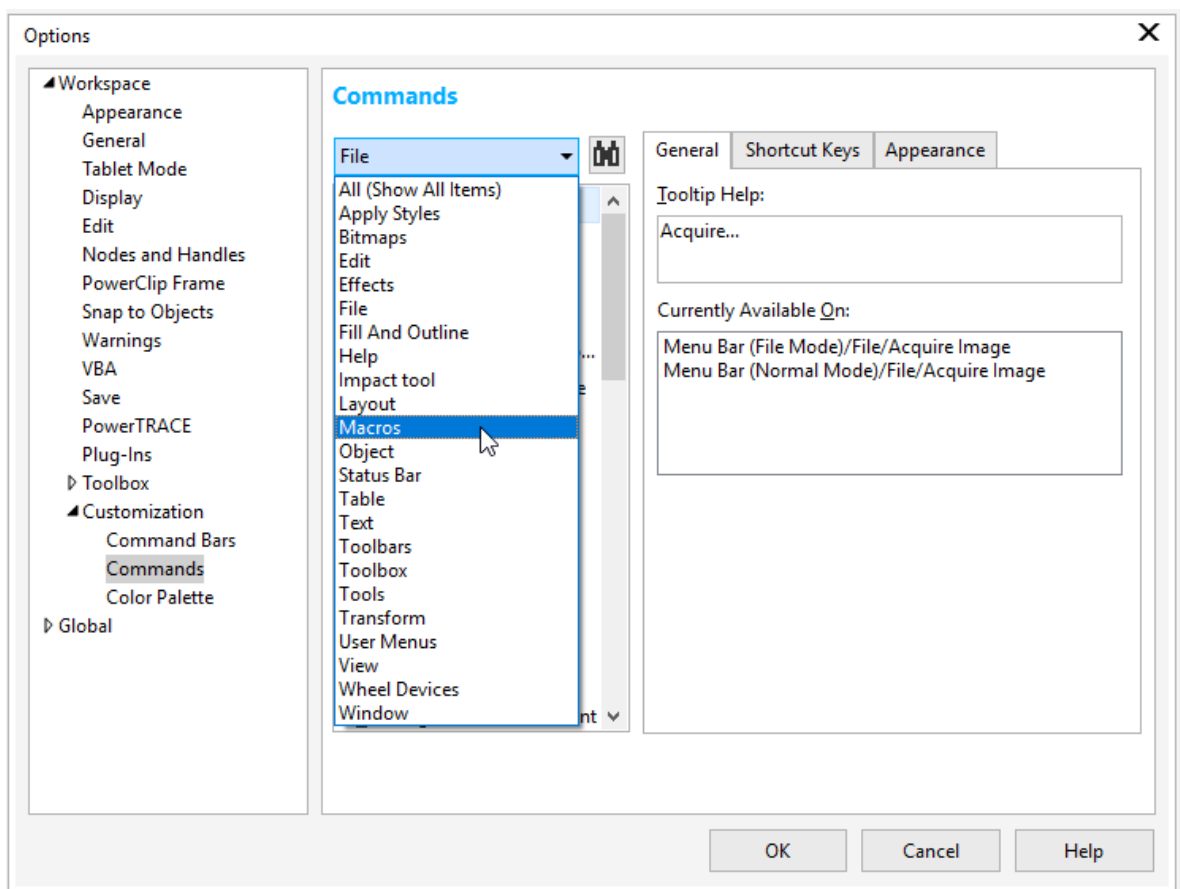
Select Commands, as shown here:



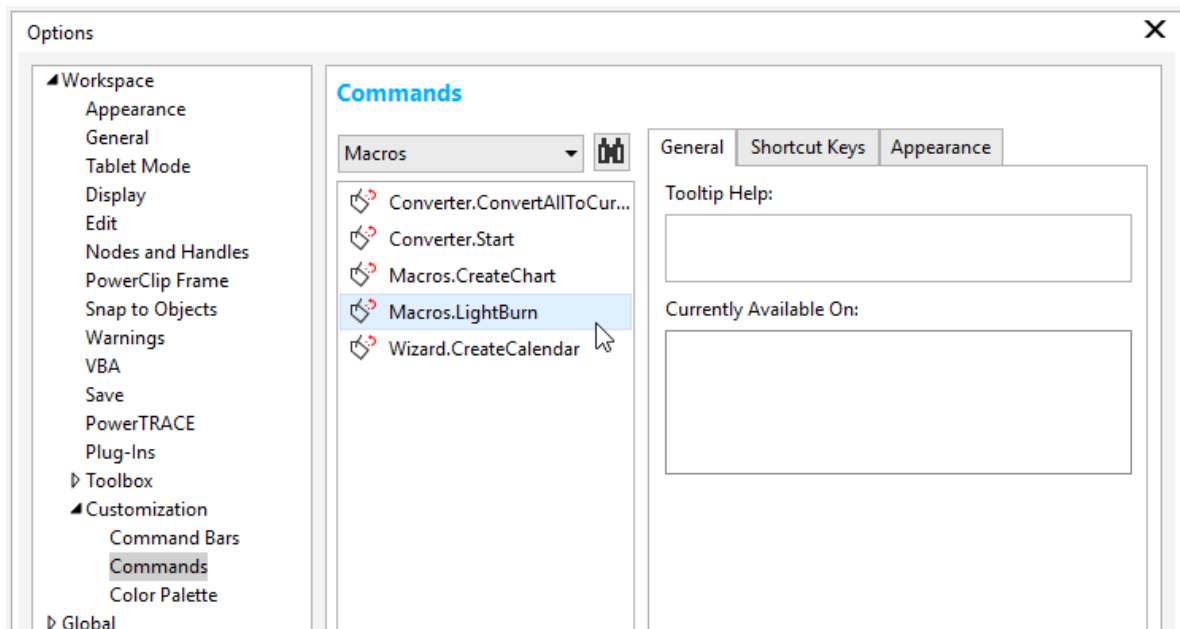
In the Commands pane to the right, click the drop-down box where you see "File", here:



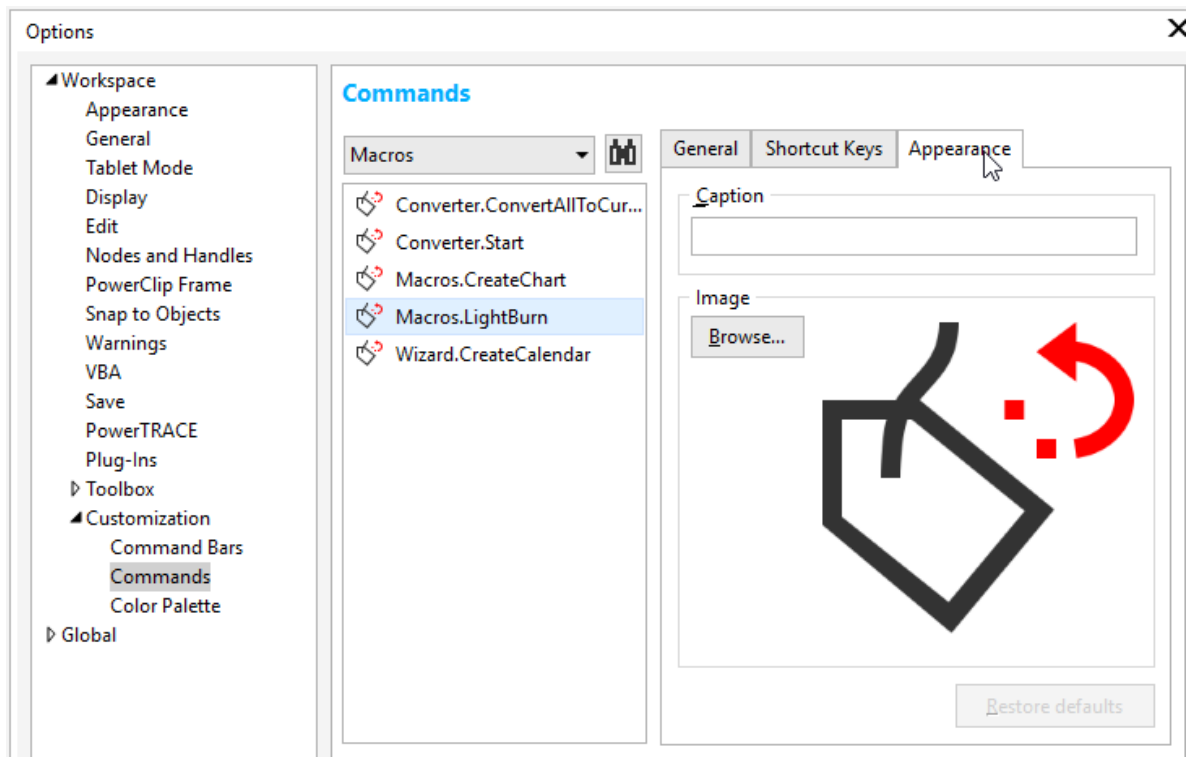
Choose the Macros entry in the list:



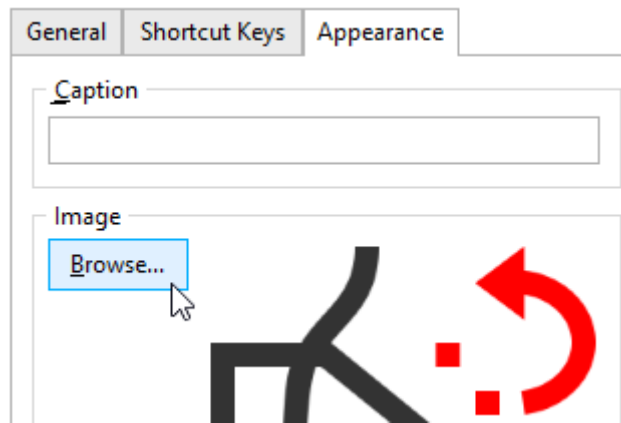
Select the LightBurn macro from the list:



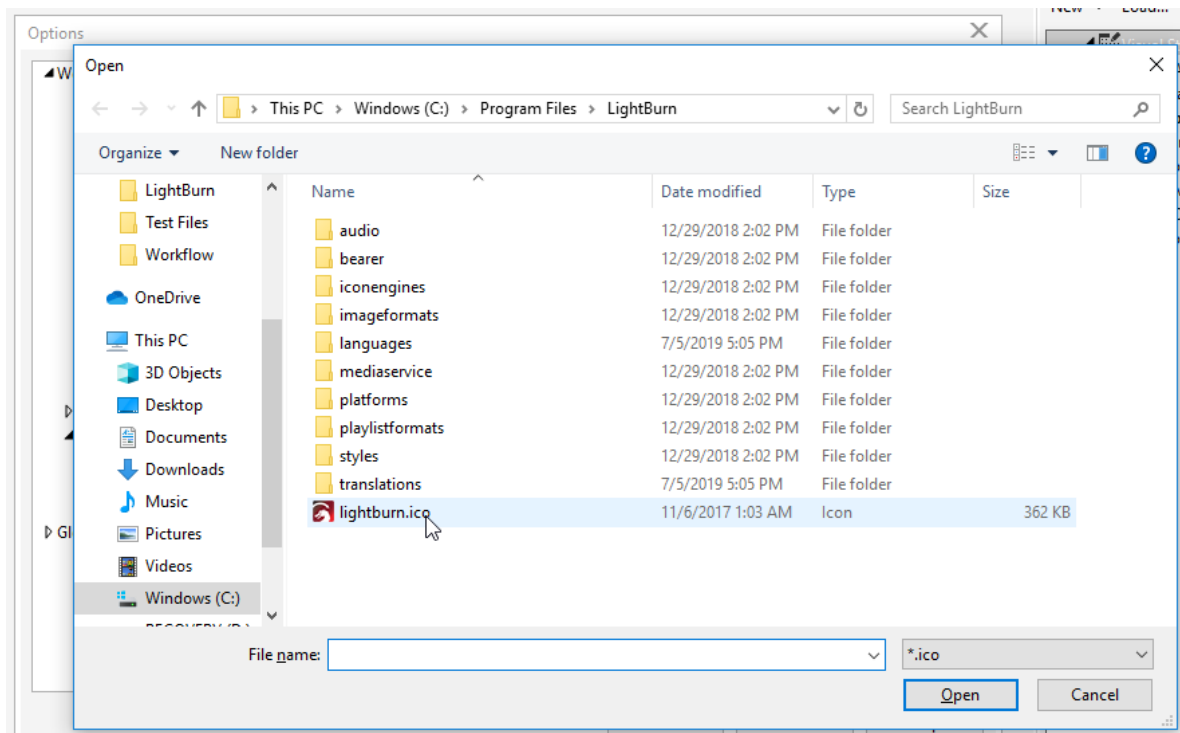
Click on the Appearance tab:



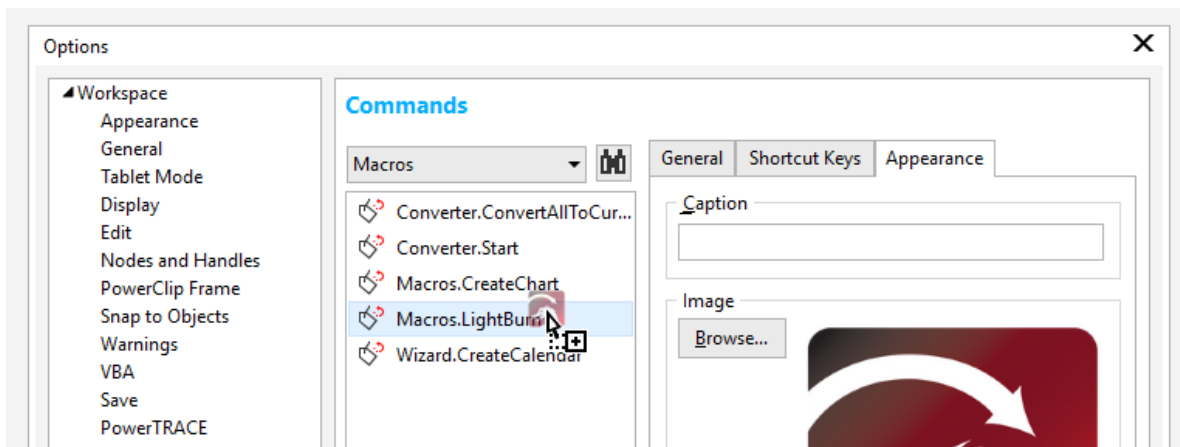
Click Browse to pick an icon:

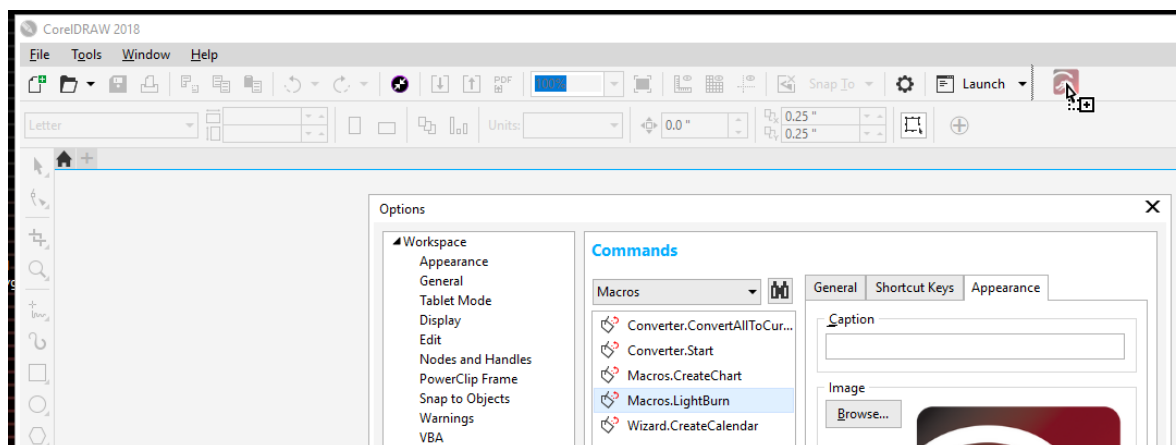


Find the LightBurn icon in C:\Program Files\LightBurn\:

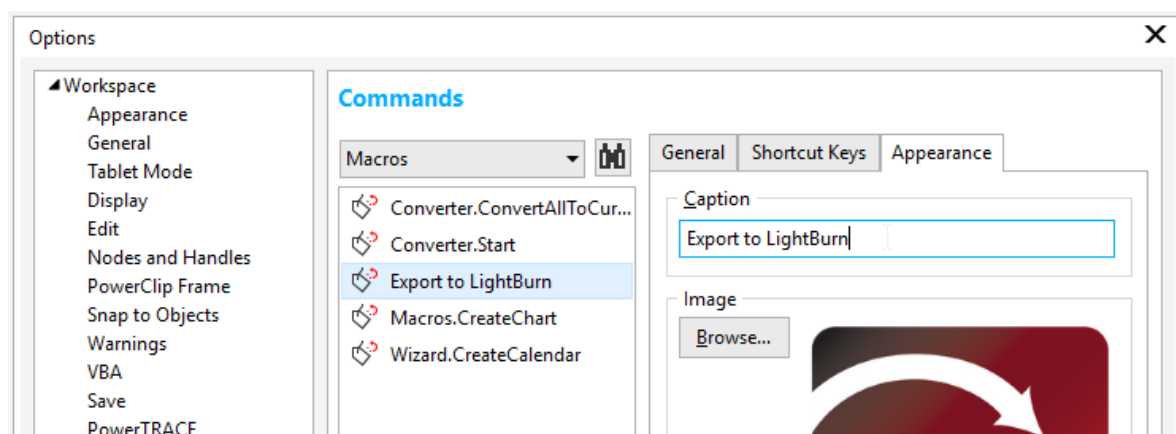


Grab the LightBurn command macro and drag it onto your toolbar, like this:





Set the caption to "Export to LightBurn":



That's it! The button on your toolbar will launch LightBurn with your current selection, or the whole file if you have no selection. You can close the Macro Manager window now.